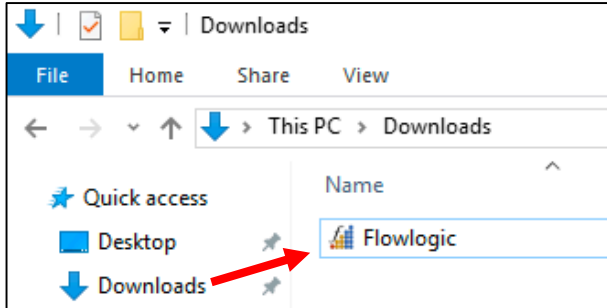


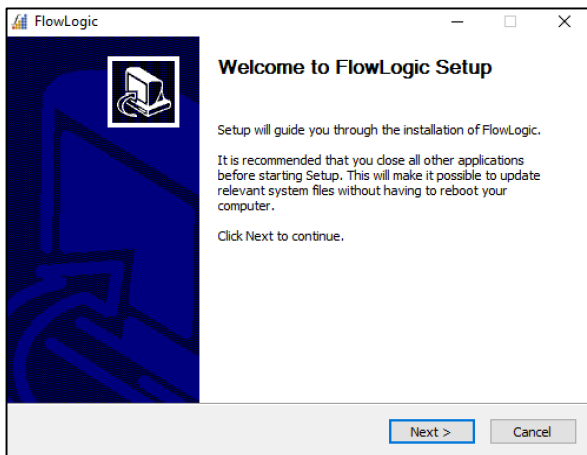
FlowLogic installation guide

Windows

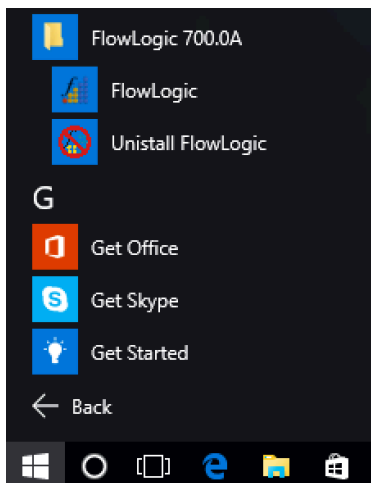
Download and double click the application (.exe) file from the Internet (or double click the .exe file in the dongle) to begin the installation.



Follow the steps in the FlowLogic Setup wizard.

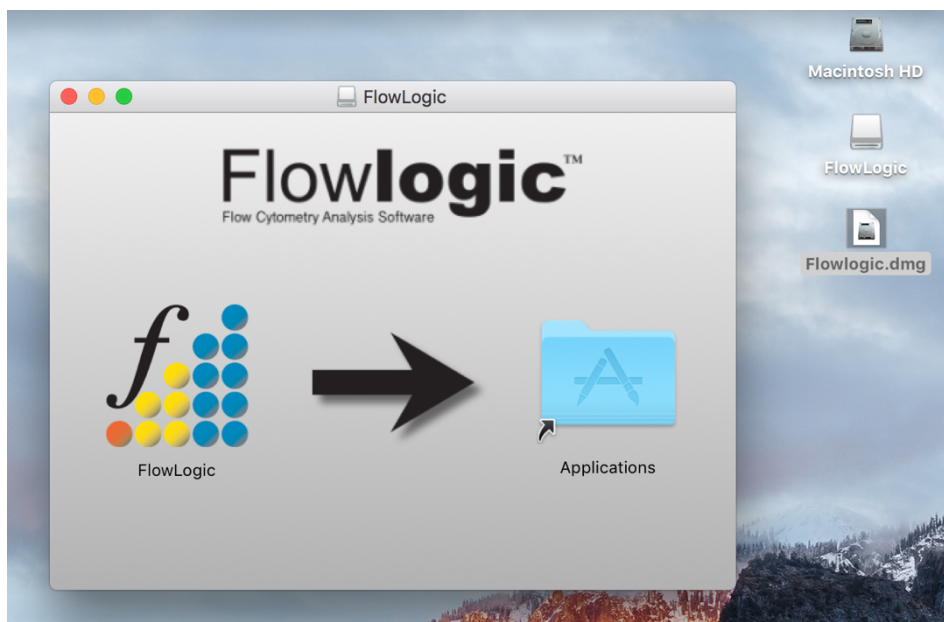


Launch Flowlogic from the applications menu or from the shortcut on the desktop. FlowLogic can also be uninstalled using the option in the applications menu.

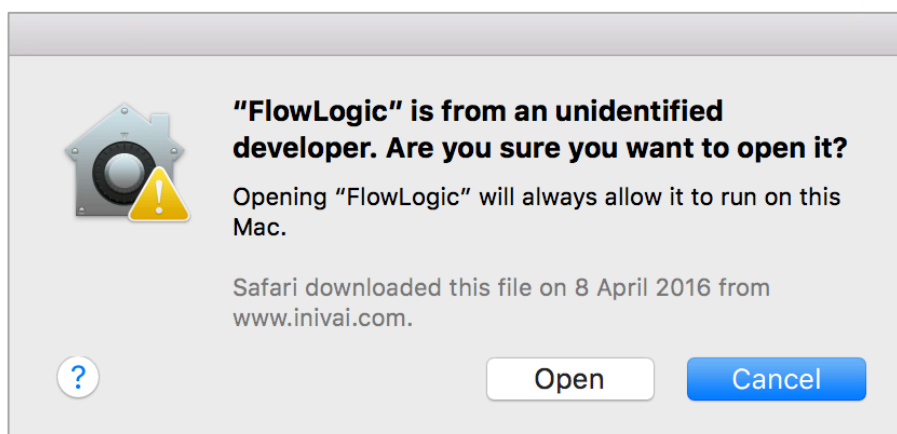


Apple

Download and double click the Flowlogic disk image (.dmg) file from the Internet (or double click the .dmg file in the dongle) and drag the FlowLogic application into the Applications folder.



When launching FlowLogic for the first time, a message may appear stating that FlowLogic can't be opened because it is from an unidentified developer. In order to run the program, right click on the application icon and then choose 'Open', and again 'Open' from the subsequent window.



Once FlowLogic has been run once, simply double click the Flowlogic application icon in the Applications folder or in Launchpad to launch the program.



Running FlowLogic from the dongle

For optimal speed and performance, it is recommended to install FlowLogic to the computer. However, it is possible to run directly from the dongle.

To run from the dongle, open the folder titled 'FlowLogic run from USB'. For Windows and Linux users, double click the .jar file to launch the program. For Apple users, double click the FlowLogic application file.

Please be aware that a more recent FlowLogic version update may exist. If you wish to run FlowLogic offline but with the current software version, take the dongle to a computer that is online, download the latest version from the Miltenyi Biotec website and replace the original application on the dongle with the new download. This can now be run directly from the dongle or copied and pasted to replace the version on other computers.

As new features are added with software updates, it may be the case that analysis files saved with newer versions of FlowLogic may not open correctly with older versions. Please also note that the licence contained in the dongle is linked to the hardware and so will not work if transferred to a new location.

